

# SK-7000A/B

# TOPOGRAPHER



- Placido Ring
- Corneal Topography Analysis
- Dry Eye Analysis
- Pupilometer



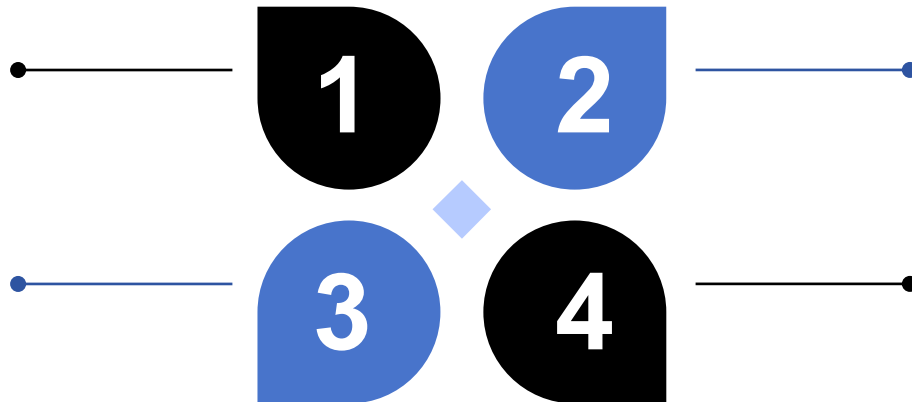
**Model: SK-7000A/B**



# What Can SK-7000A/B Do?

High-precision  
corneal  
topography

Comprehensive  
Dry Eye  
Examination

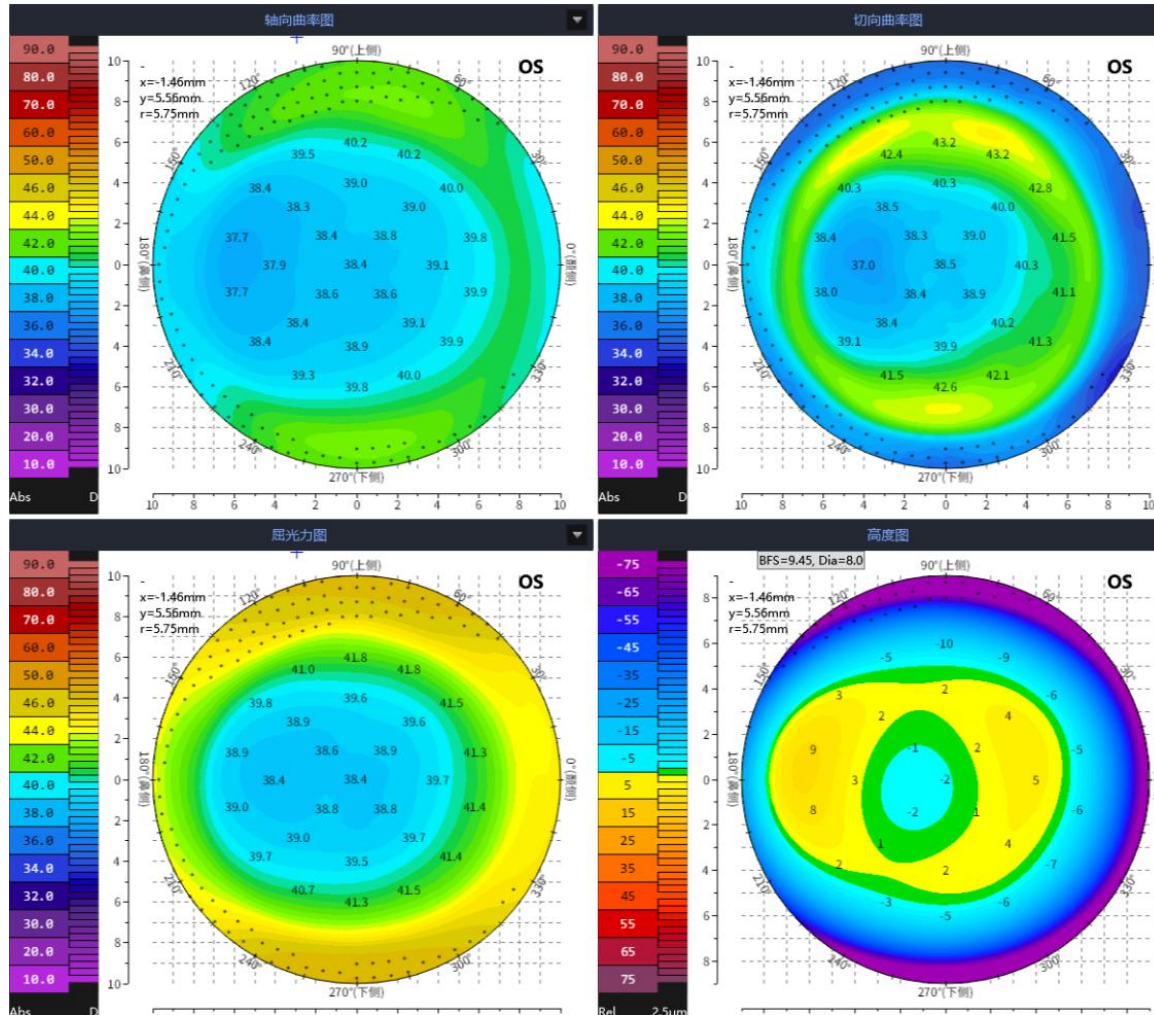


Infrared  
Pupillometer

Visual  
Simulation

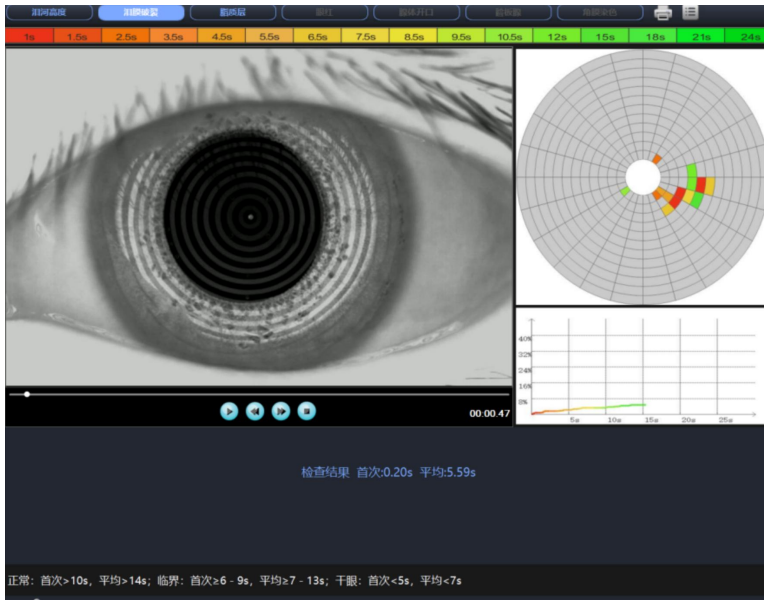


# High-precision Corneal Topography



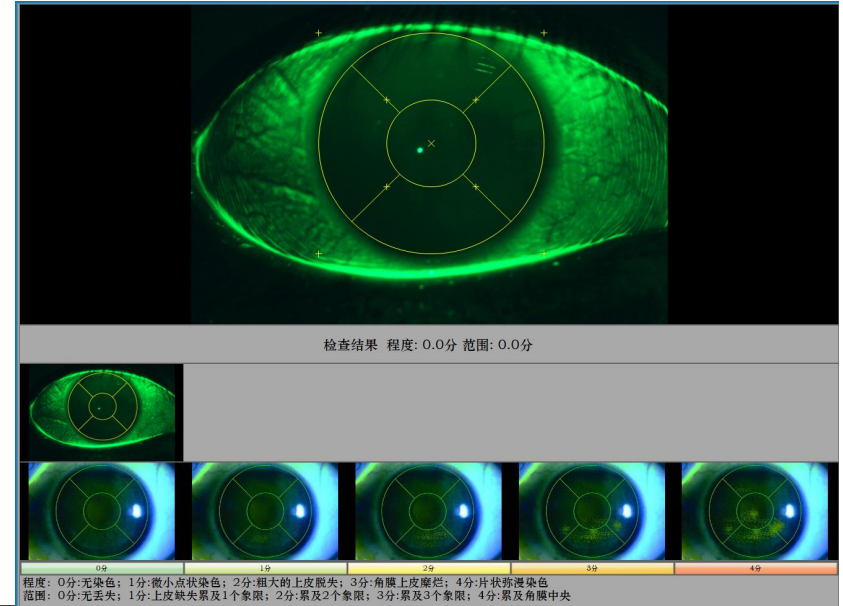
- 24-ring large Placido disk shot, over **30,000** analyzed points
- Includes axial curvature, tangential curvature, height map, refractive force map
- Includes topographic indices such as K-value, E-value, Cyl-value, etc.

# Comprehensive Dry Eye Examination



## Eye redness analysis

Taking pictures of the ocular surface through high-definition optical images is less time-consuming and more comfortable for the patient. The software automatically recognizes blood vessels and automatically analyzes and quantifies the level of conjunctival congestion for more reliable results.



## Tear film rupture time BUT

Based on the Placido disk shooting principle, the whole tear rupture is digitized and replayed, the machine automatically identifies the BUT to avoid human error, and records the topography of the BUT for more comprehensive assessment.



## Corneal Staining

The software **automatically analyzes** the staining range and the degree of spot staining for more reliable results. Professionally designed **yellow color filter** with cobalt blue light illumination makes corneal fluorescein sodium staining image clearer.

# Comprehensive Dry Eye Examination

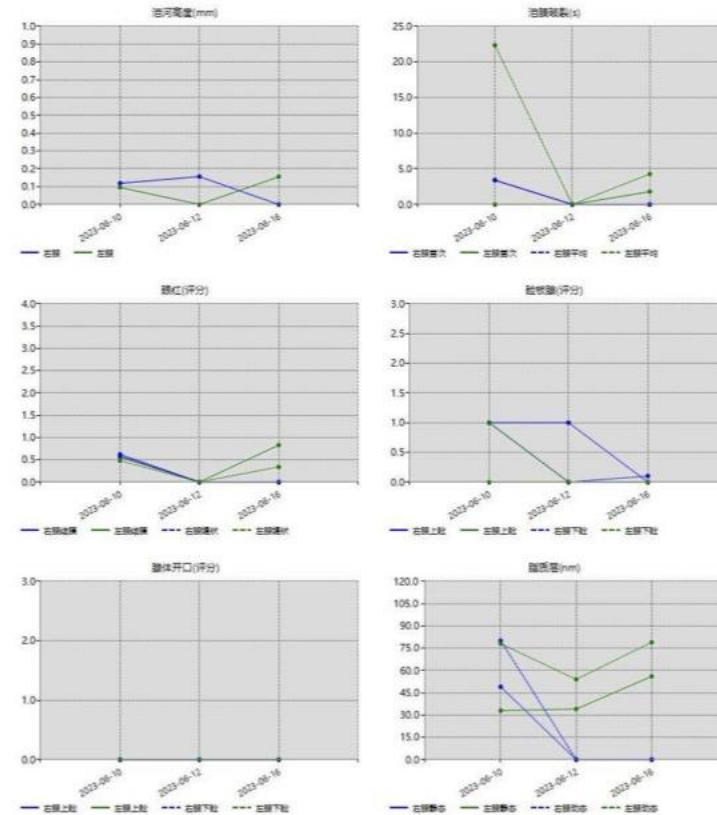
## Comprehensive examination report of ocular surface in XXXX hospital

ID:20210402481017	Name: XXX	Sex: Male	Age: XX	Vision:R: L:
	OD	OS	OD	OS
N I B U T			First time:4.33s Average:4.33s	First time:4.33s Average:7.00s
Normal: first>10s, average>14s; critical: first<6-9s, average>=7-13s; Dry eye: first <5s, average<7s				
T M H			Central:0.19mm Average :0.19mm	Central:0.25mm Average:0.25mm
[Infrared light] Normal: ≥0.2mm, Mild: <0.2mm, Moderate: <0.1mm, Serious:unmeasurable [Visible light] Normal: ≥0.35mm, Decreased tear secretion: <0.35mm				
L L A			Average:30-80nm Highest:120-160nm Lowest:<30nm	Average:30-80nm Highest:120-160nm Lowest:<30nm
Reference: 120-160nm 80-120nm ≈80nm 30-80nm ≈30nm <30nm				
R E			Nasal:0.6sc Bitamporal:0.4sc	Nasal:0.2sc Bitamporal:0.5sc
Red eyes Grade Index: 0-No hyperemia; >0-1:Mild; ≥1-2:Moderate; ≥2-3:Severe; ≥3:Serious				
G L A N D			Score:1.0sc Score:0.9sc	Score:1.0sc Score:1.0sc
Reference: 0-Normal ;1-Covered with capping; 2-Pouting or Obliteration; 3-Serious plugging or Gland opening atrophied				
M E I B O			Def Rate:53% Score:1.6sc Def Rate:32% Score:0.9sc	Def Rate:91% Score:2.7sc Def Rate:28% Score:0.8sc
Score: 0-No Deficiency; 1-Deficiency ≥33%; 2-Deficiency 34-66%; 3-Deficiency ≥67% If percentage rate is higher, deficiency will be more obvious				
C S			Degree:1.0sc Range:1.0sc	Degree:1.0sc Range:1.0sc
Degree:0-no staining; 1-Tiny Punctate Staining; 2-Thick epithelium loss; 3-corneal epithelial erosion; 4-Flake diffuse staining. Range:0-no loss; 1- involved 1 quadrant; 2-involved 2 quadrants; 3-involved 3 quadrants; 4-involved central of the cornea				

Date :02-04-2021 Doctor :XXX

## SK 干眼进展分析报告单

姓名:郑立兵 性别:男 年龄:32 检查号:20230612189000

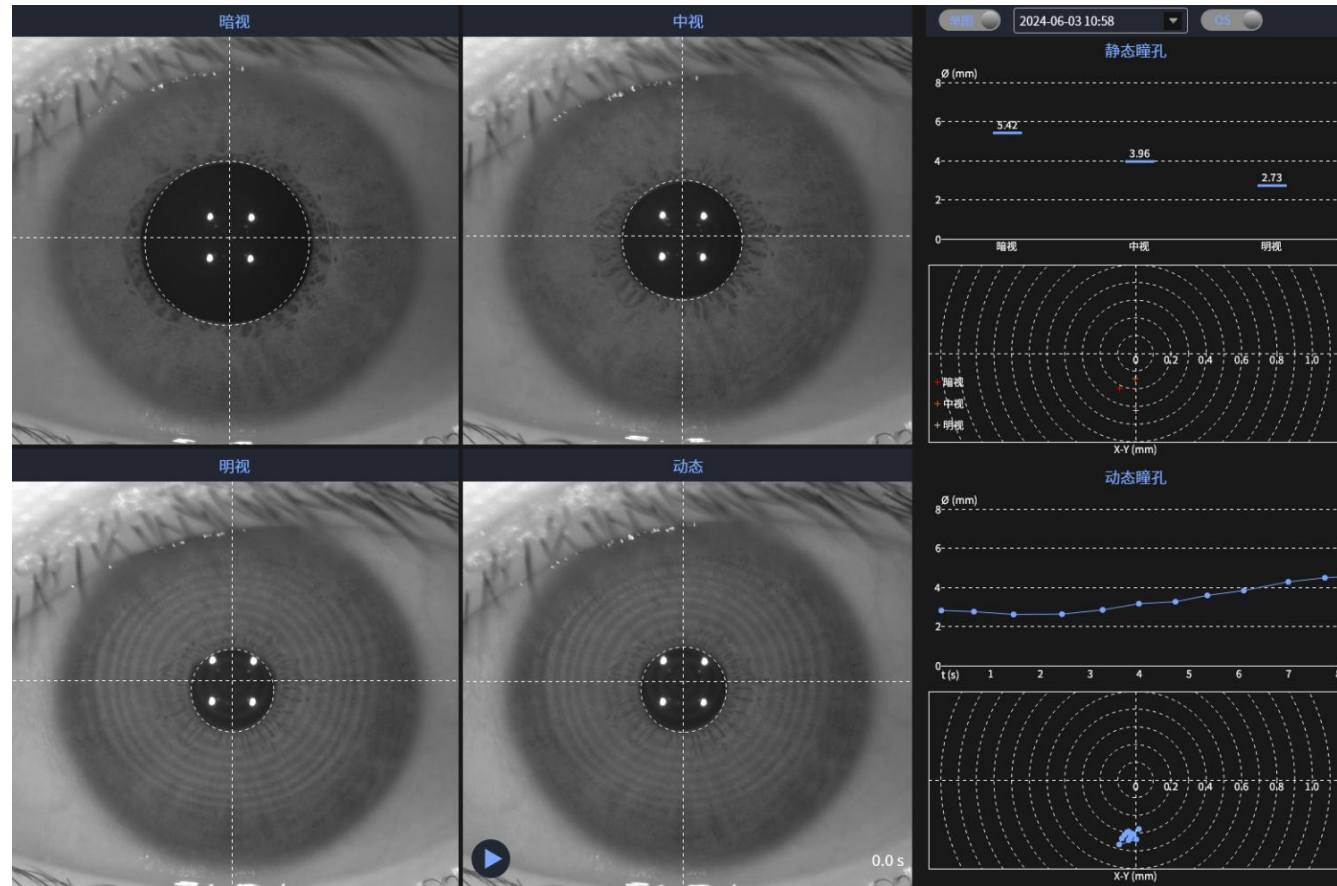


拍摄医生: 医生: 检查日期:2023-06-19

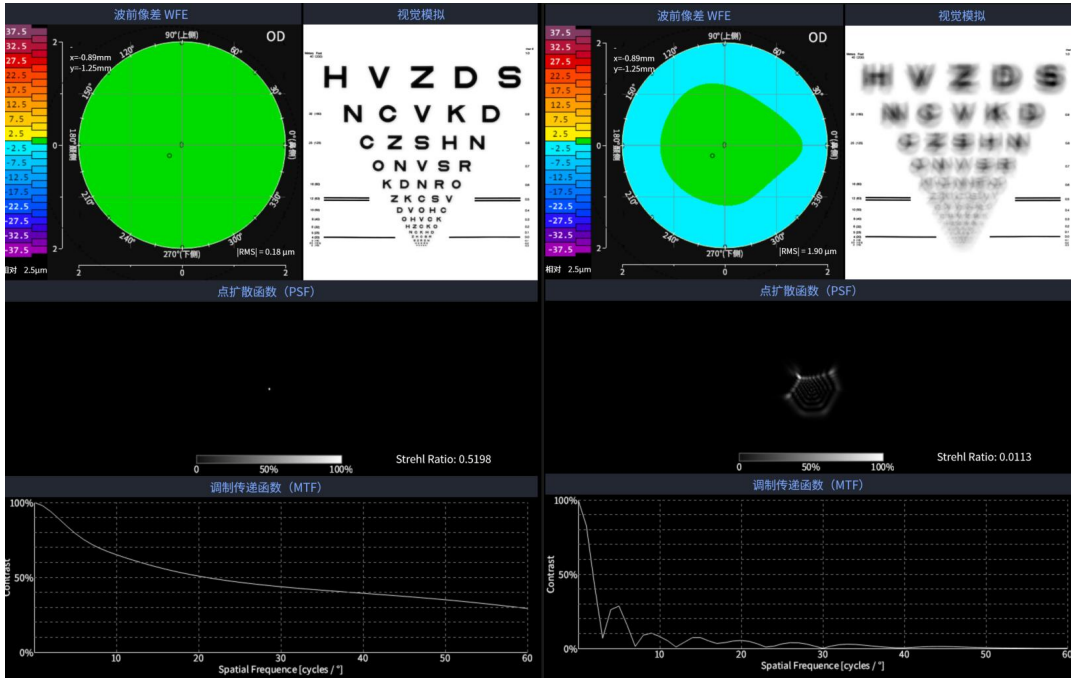
- Automatic generation of report forms
- Single and multiple reports can be selected at will
- Easy to add with one click
- No need to fill in manually
- Graphic and textual, easy to communicate with doctors and patients

# Infrared Pupillometer

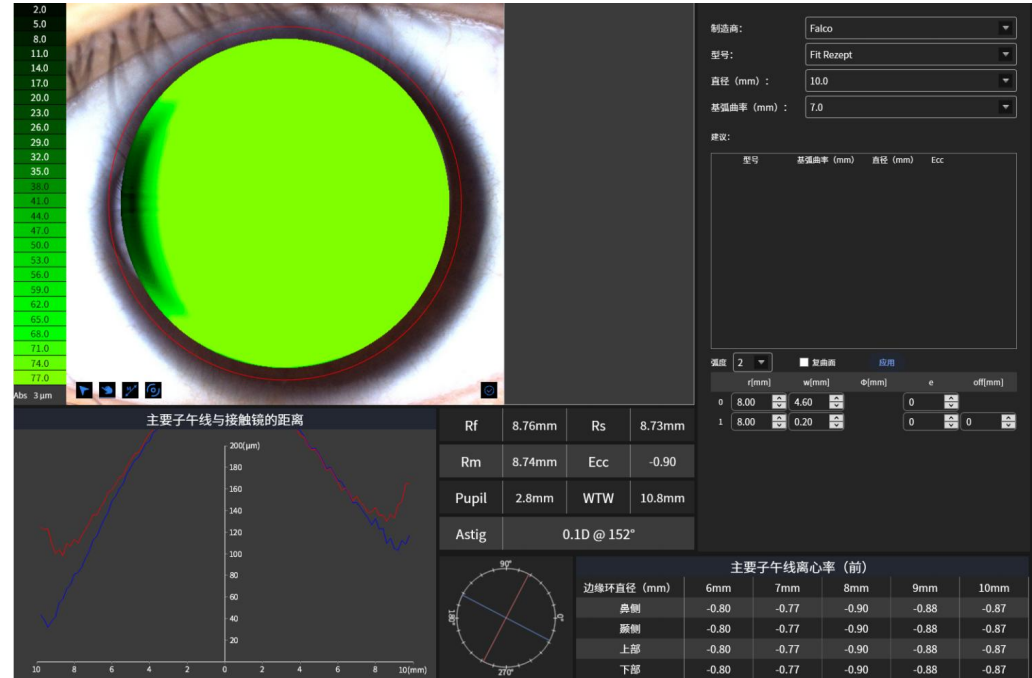
- ◆ Darkroom Measurements
- ◆ The instrument provides background light to simulate different light conditions
- ◆ Measurement of pupil diameter under different conditions
- ◆ Measurement of pupil change with light intensity.



# Visual Simulation



Simulation of lens



Corneal Contact Lens Simulation

## Basic Parameters

Model Name	SK-7000A	SK-7000B
Measuring Method	Big Placido Ring	
<b>Number of measuring rings</b>	<b>24 Rings</b>	
<b>Measurement points</b>	<b>≥34560 points</b>	
Measuring refractive range	1-100D	
Light source	white LED, infrared LED, green LED, blue LED	
Alignment mode	fixed focus, manual alignment	
<b>Shooting mode</b>	<b>Automatic / manual</b>	
Examination items	corneal topography	corneal topography, dry eye
Topography display mode	overview map, single map optional, quadruple map optional, 3D image	
Measurement data	corneal curvature, astigmatism axis, pupil diameter, white to white distance, pupil position, corneal center position	
Fourier analysis	√	
Aberration analysis	Zernike analysis ≥ 8 order	
Conical cornea analysis	√	
Corneal contact lens fitting	√	
Contrast analysis, aberration analysis	√	
3,5,7mm meridian curvature/semi-meridian curvature	√	
Mean refractive power (MPP) in different optical zones, spherical aberration, higher order aberration, aspheric index	√	

# Technical Data for 7000A/B

## Basic Parameters

Model Name		SK-7000A	SK-7000B
Mean refractive power (MPP) in different optical zones, spherical aberration, higher order aberration, aspheric index		√	
Working distance		75cm	
Data output		external printer output	
Data interface		USB, support DICOM uploading	
Dry eye examination	Tear river height measurement	/	√
	Tear film rupture time		√
	Lipid layer analysis		√
	Eye redness analysis		√
	Gland opening shot analysis		√
	Blepharoplasty infrared imaging		√
	Corneal staining analysis		√
	Dry Eye Comprehensive Report		√
	Dry Eye Fully Automated AI Analysis		√
	Corneal contact lens fitting		
Dry Eye Questionnaire	Chinese Dry Eye Questionnaire, OSDI Questionnaire, SPEED Questionnaire		