

LS-7C

With DRY EYE MODULE



Placido Ring



White Ring

Almighty

Professional dry eye examination equipment comprehensive function to meet the needs of clinical research

Automatic

Full-automatic AI software + Quantification of testing standards easier diagnosis by doctors

Advanced

Professional-grade image acquisition system Advanced AI algorithm combined with image comparison World-class optical system

Report

The test report with pictures and describe report clearly and in detail

Non-invasive

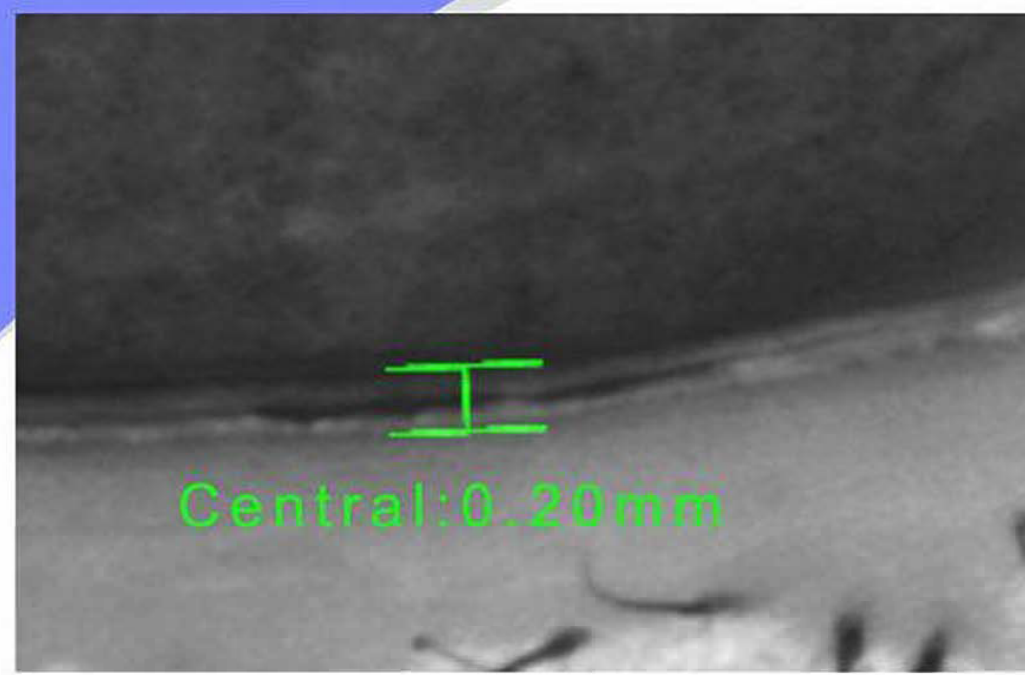
Pure infrared shooting Reduce data interference

High Efficiency

Quickly complete the test and print the report to improve the efficiency of clinical testing

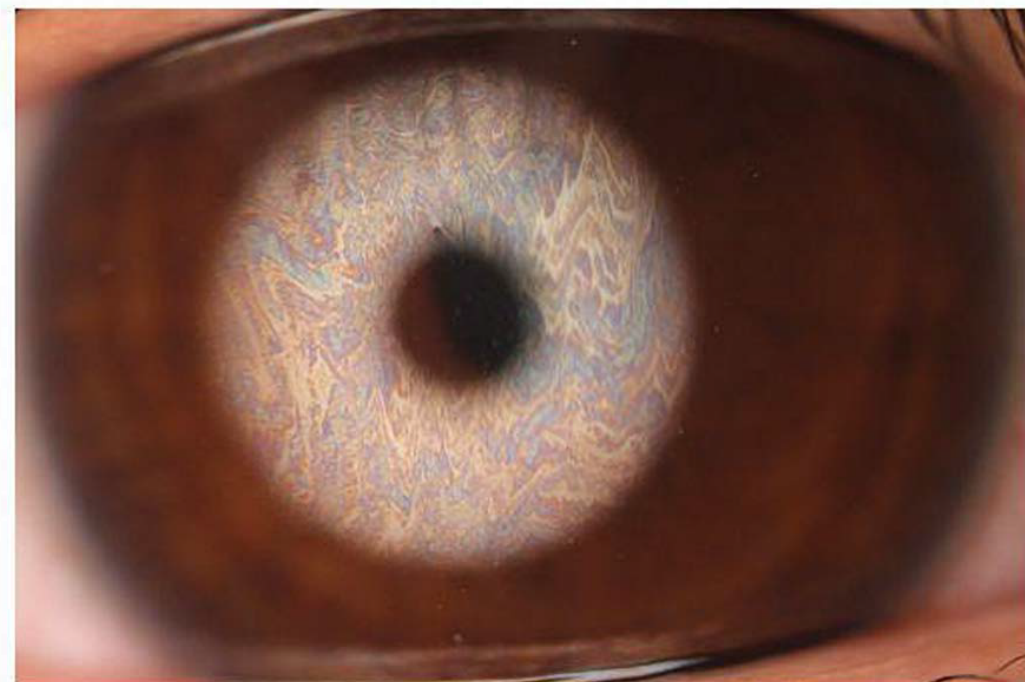
Automatic quantitative analysis

Accurate diagnosis



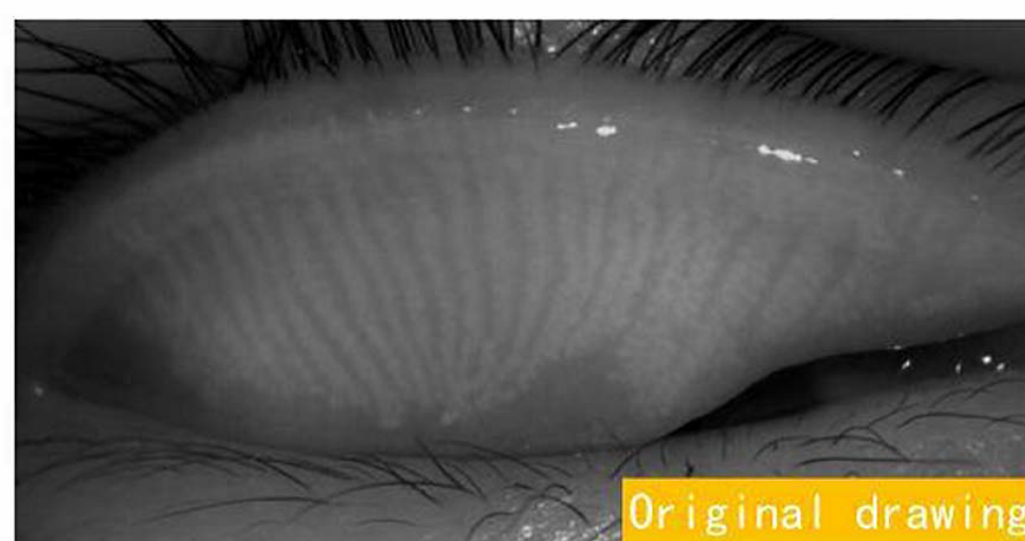
TMH

AI auto identification, auto measurement
Eliminate the tedious manual measurement process, and the results are more accurate
Support manual measurement
Infrared/Visible light



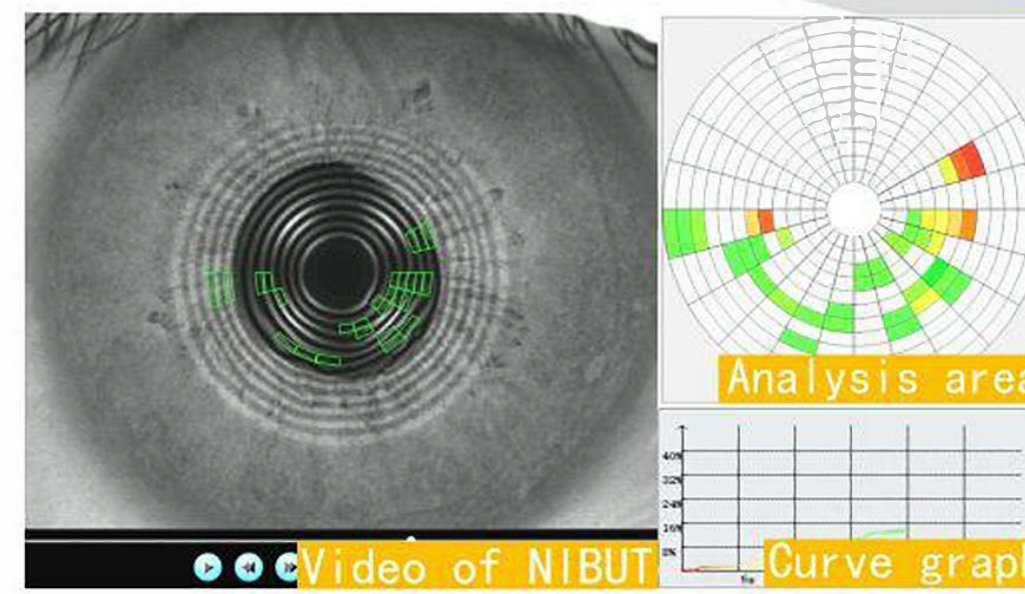
Lipid Layer Analysis

White ring design
Using white ring projection, can completely present the true color and shape of the lipid layer
AI auto quantitative analysis



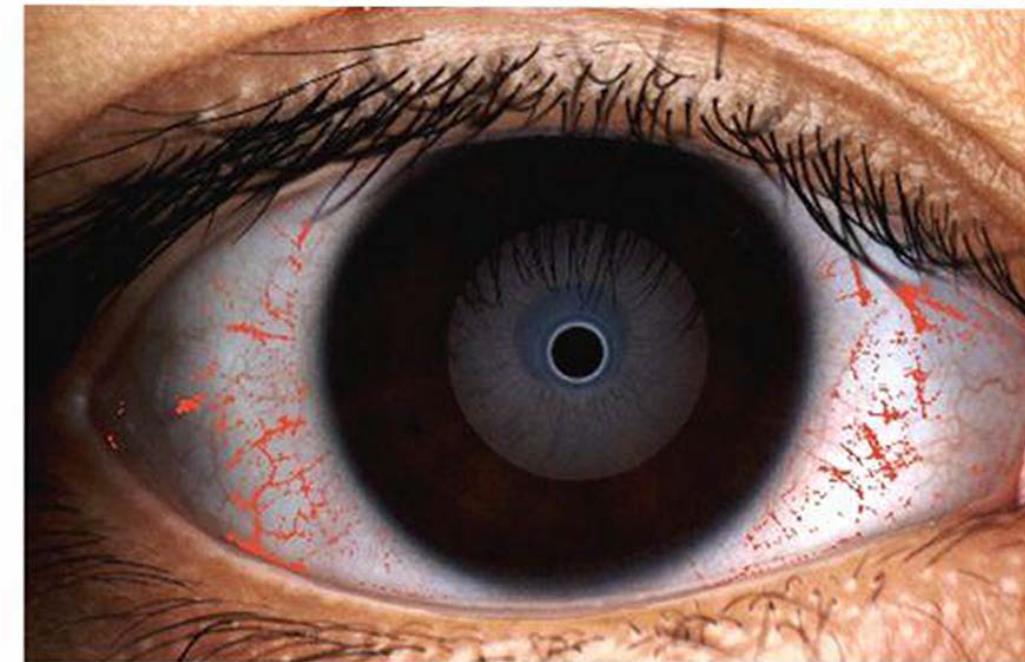
Meibomian Gland Imaging Analysis

HD image
Professional infrared imaging can clearly observe the morphology of the meibomian acini
AI auto quantitative analysis
Support auto identification, strengthen the contrast of glands
Support manual grading



NIBUT

AI auto quantitative analysis
Using advanced AI algorithms to analyze the shape of the Placido ring
All-around
Provide first and average break time, Tear film break graph, and curve graph to intuitive display tear film break in an all-round



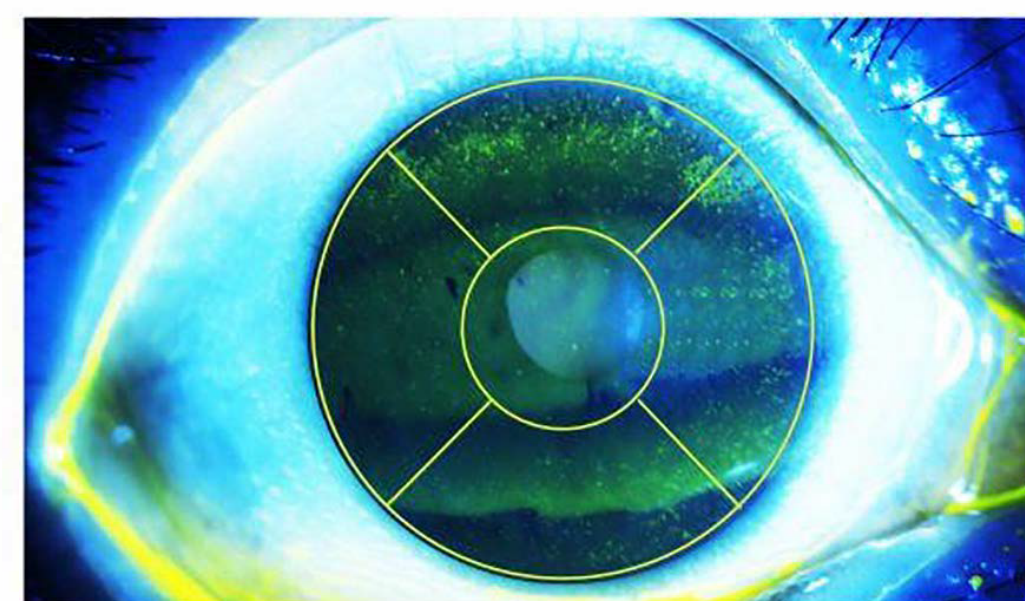
Ocular Redness Analysis

Auto quantitative analysis
Quantitative analysis and provide score of conjunctiva and ciliary
Provide enhancement graph and contrast graph
Support manual grading



Gland Opening

HD image
Can clearly obtain the overall shape of the eyelid margin Image with subtle changes in gland openings



Corneal Staining Analysis

Professional yellow filter
Professional yellow filter with obvious fluorescence effect
Auto quantitative analysis
Support manual grading

Technical parameter

Dry eye part

TMH: Auto /Manual
NIBUT : Auto
Static lipid layer analysis : Auto /Manual
Dynamic lipid layer analysis: Manual simple video comparison
Ocular Redness Analysis: Auto /Manual
Gland Opening: Manual
Meibomian glands: Auto /Manual
Corneal Staining: Auto /Manual
Eye position recognition: Auto
Questionnaire: 3 types
Report: Comprehensive/single item

Slit Lamp part

Optical design type: Galileo type
Magnification Changer: Revolving Drum
Eyepiece: 12.5X
Magnification: 6X, 10X, 16X, 25X, 40X
Optical resolution: 161 pair lines/mm
Diopter compensation range: $\pm 7D$
Interpupillary distance range: 48mm~78mm
Slit width: 0mm~14mm
Slit height: 1mm~14mm
Slit angle: horizontal rotation 0° ~ 180°
Slit Tilting Angle: 5° , 10° , 15° , 20°

Spot diameter: $\phi 0.2$, $\phi 1$, $\phi 2$, $\phi 5$, $\phi 10$, $\phi 14$ (mm)
Color filters: heat absorption, grey filter, red-free, cobalt blue, yellow filter
Light source: Warm color LED bulb
Light control mode: PWM to ensure the brightness
Digital collector: built-in professional level medical collector with 20 million pixels
Background light: Coaxial background light